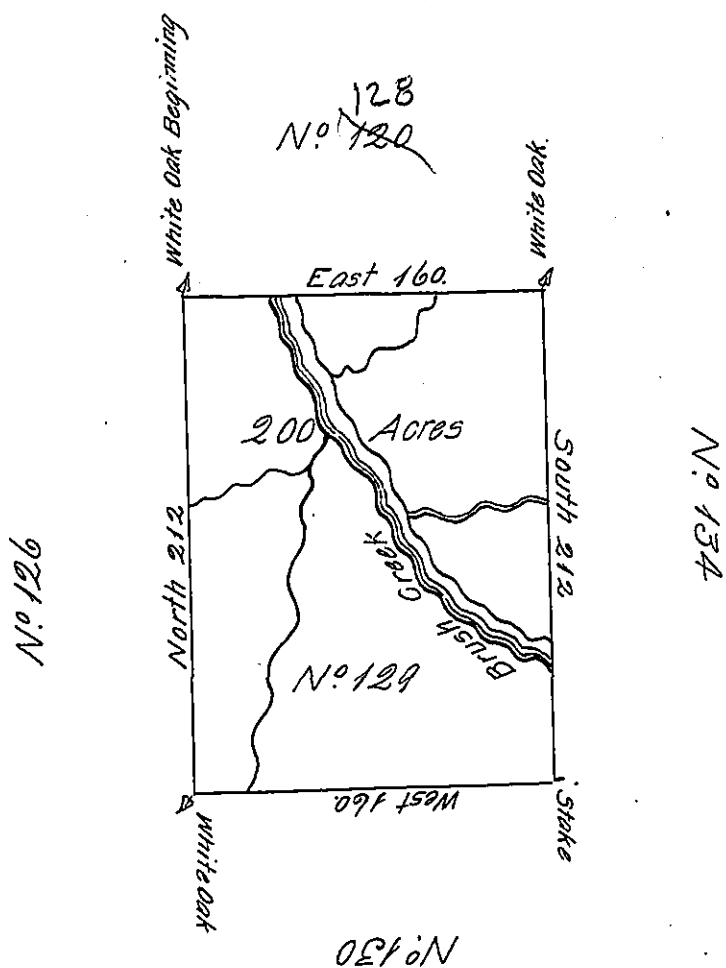


✓



The above is a Draught of a Survey made in the Month of July 1785 in Pursuance of Instructions from the Surveyor General Dated January 22<sup>d</sup> 1785 Situate on the North Side of the Ohio River on the waters of Brush Creek in District No 2. Containing Two Hundred Acres with the Allowance of 6 P. Cent

Dan<sup>l</sup> Leet D.S.

To

John Lukens Esq. Sur. Gen.

IN TESTIMONY that the above is a copy of the original remaining on file in the Department of Internal Affairs of Pennsylvania, made conformably to an Act of Assembly approved the 16th day of February, 1833, I have hereunto set my Hand and caused the Seal of said Department to be affixed at Harrisburg, this fourteenth day of November 1905.

*Leaie P. Brown*  
Secretary of Internal Affairs.